



22  
club



# Born in a Georgian Manor in London's Mayfair,

*The Twenty Two*, a Members' Club for the creative and curious, finds its New York home in a 19<sup>th</sup> Century landmark building in Union Square – the former Margaret Louisa Home.

Step inside a heady mix of spaces to satisfy your senses; from dining, to lounging, to gardens in-between skyscrapers & beneath the stars. Curated for losing your inhibitions... discreetly. Dine or dance in sunken, candlelit rooms, or drink alfresco, wherever the mood takes you. All we ask is that you let your impulses lead the way. Because we built this for them.

Come for a morning, stay for an afternoon. Maybe even watch it turn into a night you won't forget. Shaken, over ice, please! And if the night continues a little too long... we have bedrooms, too. *The Twenty Two* was created for anything you want, just as long as you play elegantly.

Come and explore from dawn till dusk, and into the effervescent beyond. A new part of the mercurial myth that is New York City.

We built you a place to let go.

Through our doors is where you belong,

Navid Mirtorabi

Michael Chetrit



The Living Room



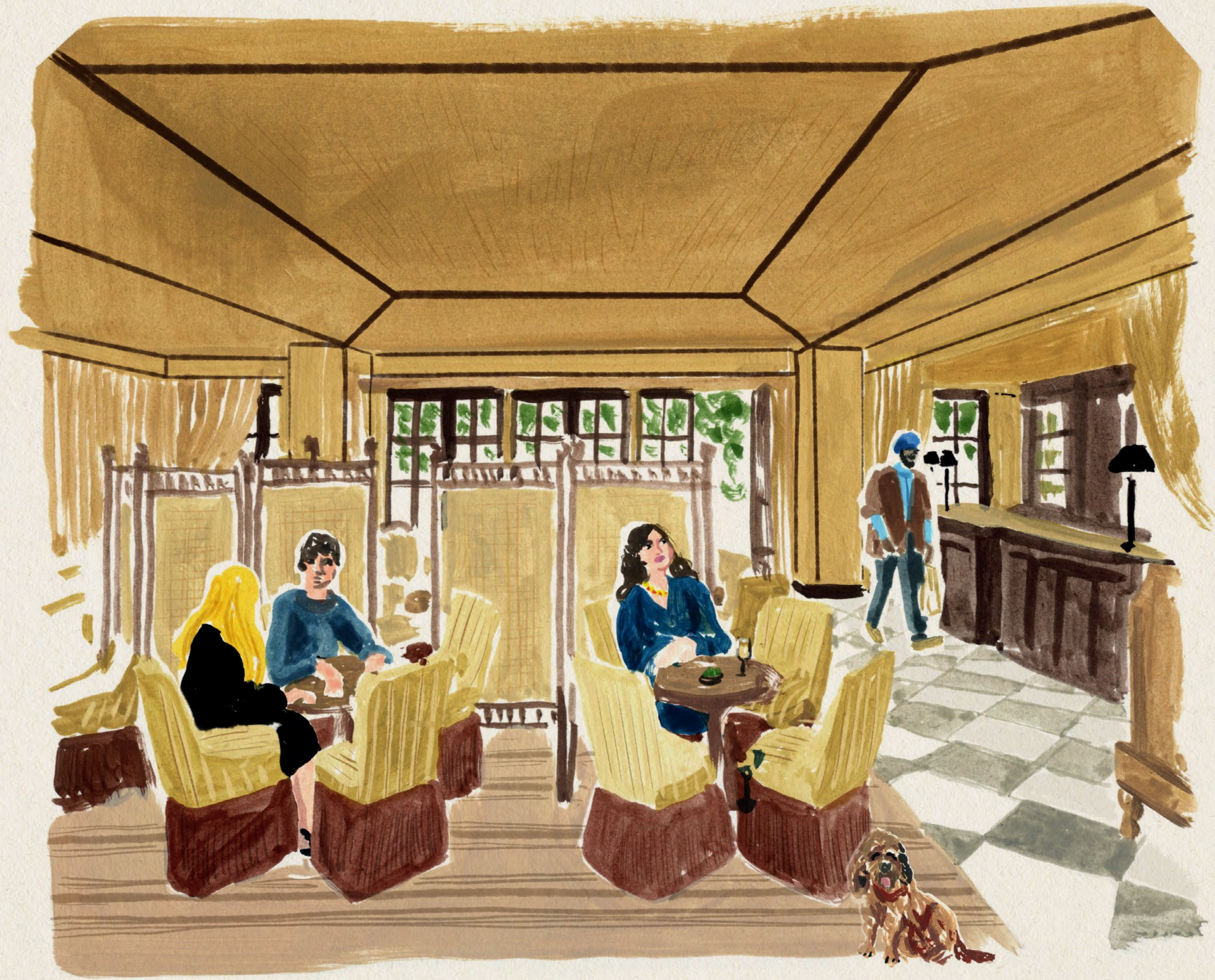
The Living Room



The Dining Room



The Dining Room



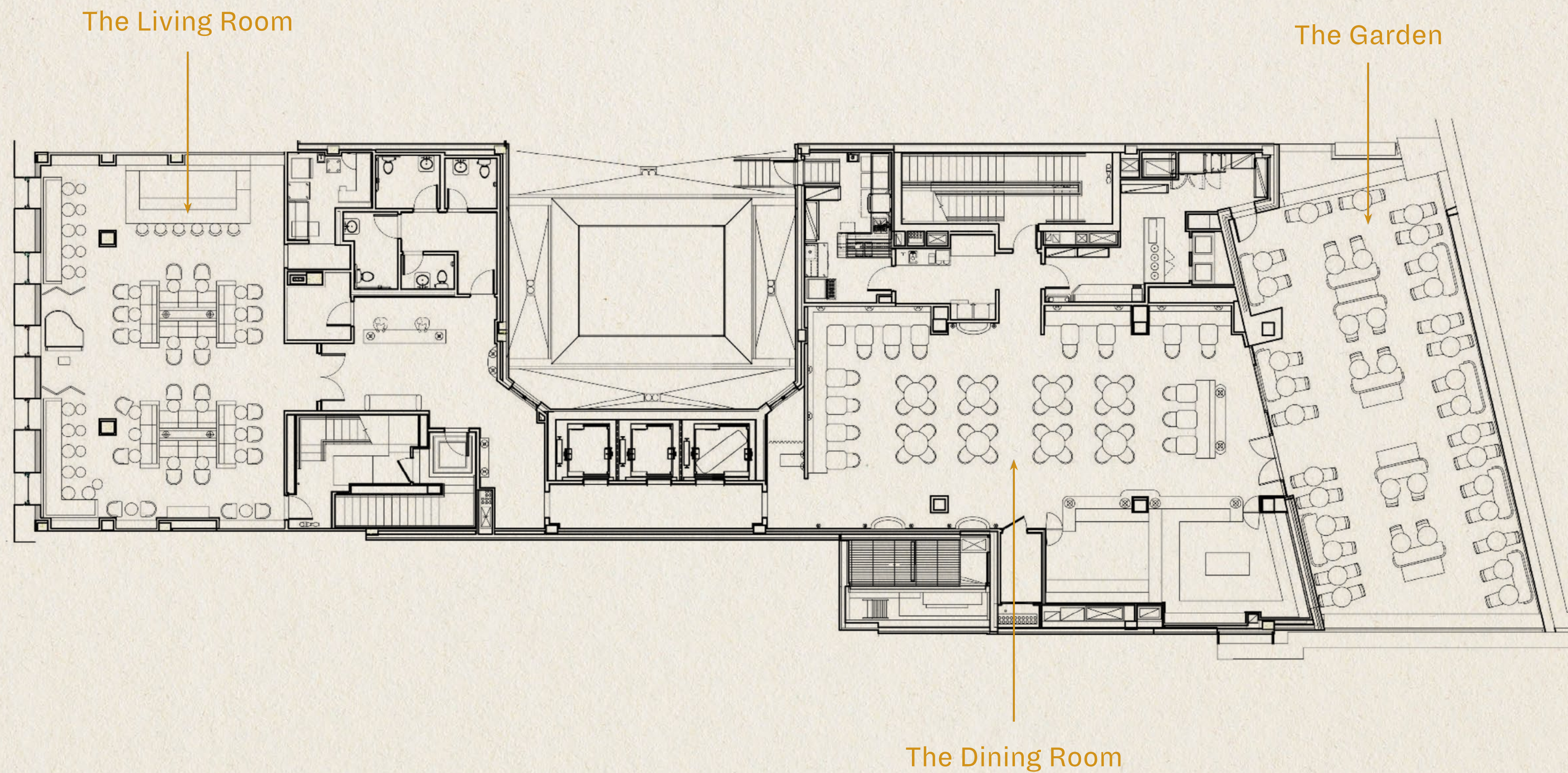
The 9<sup>th</sup> Floor



The 9<sup>th</sup> Floor



# Step inside a heady mix of spaces...



And if the night continues  
a little too long...



Junior Suite

we have bedrooms, too.



Junior Suite

# The Twenty Two New York Culinary Experience

At *The Twenty Two*, our Food and Beverage operations are curated by the renowned all-female team from New York City's beloved *Raf's* and the prestigious Michelin-starred *The Musket Room*.

Leading the charge are sisters Jennifer Vitagliano and Nicole Vitagliano, natives of the city, celebrated for their impeccable taste and unparalleled hospitality. Complementing their vision are the culinary talents of Executive Chef Mary Attea and Executive Pastry Chef Camari Mick, both recipients of numerous culinary accolades, including three consecutive James Beard Award nominations.



# NY Membership Pricing

\$750 Joining Fee

MEMBERSHIP-NYC@THETWENTYTWO.COM

## Local Patron

\$2,000

## Global Patron

\$3,000

## Young Patron

Under 30 Years Old  
\$1,200

## Young Global Patron

Under 30 Years Old  
\$1,800

## Joint Local

\$3,500

## Joint Global

\$4,500

*(prices per annum)*

Come as you are,  
we'll be here.

[APPLY FOR MEMBERSHIP HERE](#)

THE TWENTY TWO NEW YORK  
16 EAST 16<sup>TH</sup> STREET NY, NY 10003