



22  
club



# Born in a Georgian Manor in London's Mayfair,

discover The Twenty Two, a members' club designed for the creative and curious, nestled within the historic Margaret Louisa Home in Union Square, New York.

Step into a captivating array of spaces, from intimate dining areas to serene gardens amidst skyscrapers and stars. Crafted to encourage uninhibited exploration, our club invites you to dine in candlelit elegance or sip cocktails alfresco as the mood strikes.

Embrace spontaneity and follow your impulses within our walls, where morning visits seamlessly transition into unforgettable nights. Should your adventures extend past twilight, our bedrooms await.

The Twenty Two beckons you to revel elegantly from dawn till dusk and beyond, becoming a luminous chapter in the mercurial myth that is New York City. Join us and find your place to unwind.

We built you a place to let go.

Navid Mirtorabi

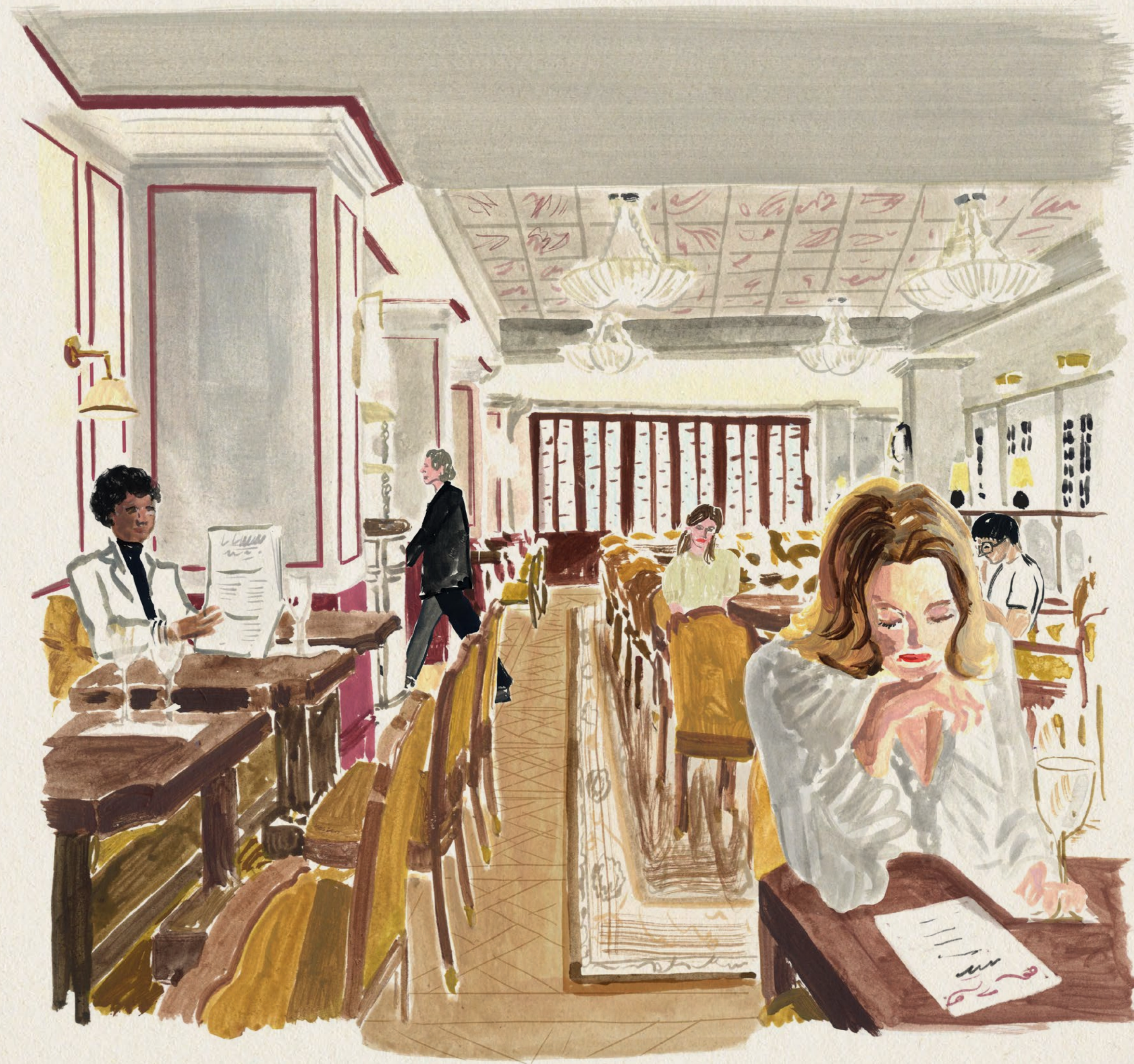
Michael Chetrit



The Living Room



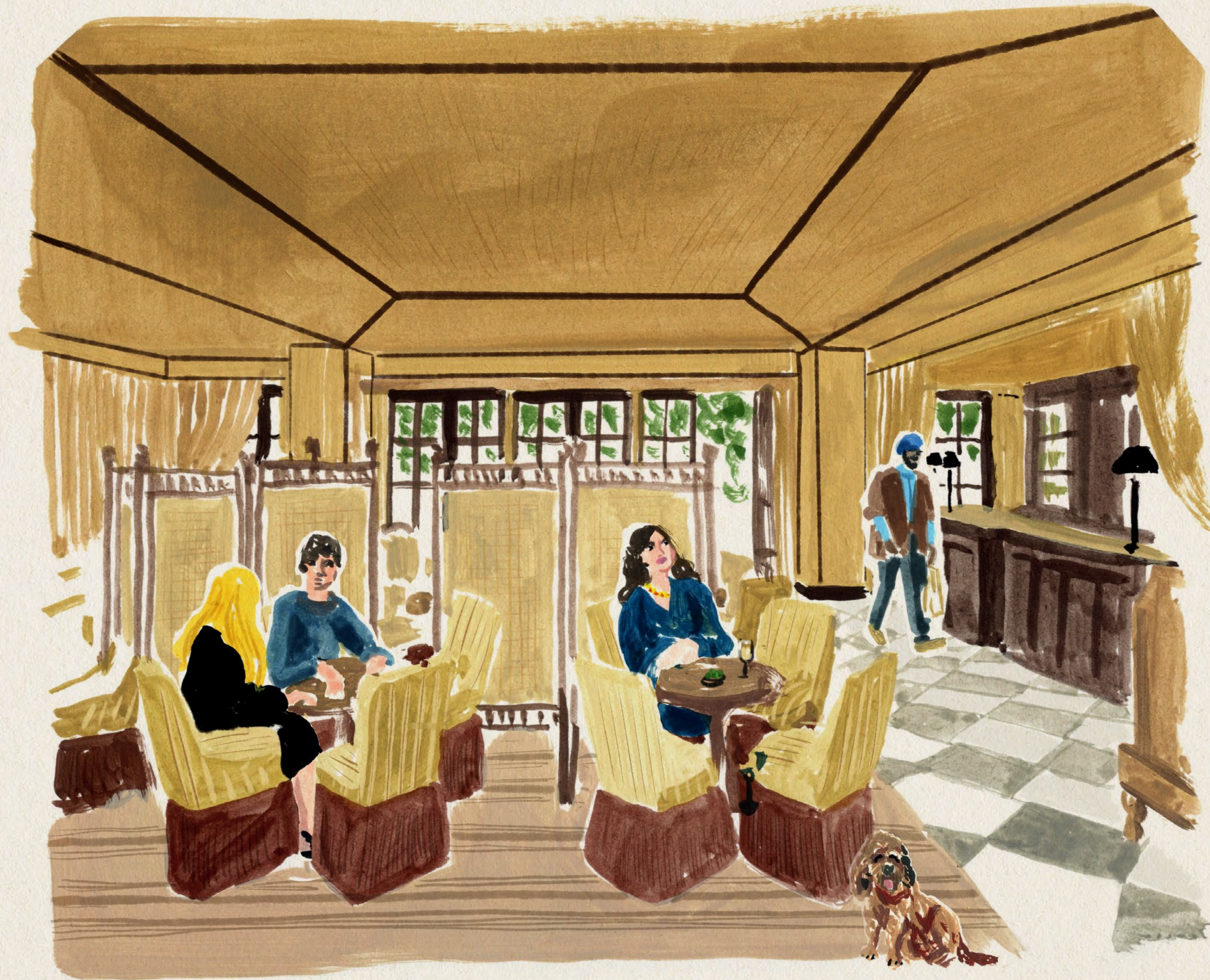
The Living Room



The Dining Room



The Dining Room



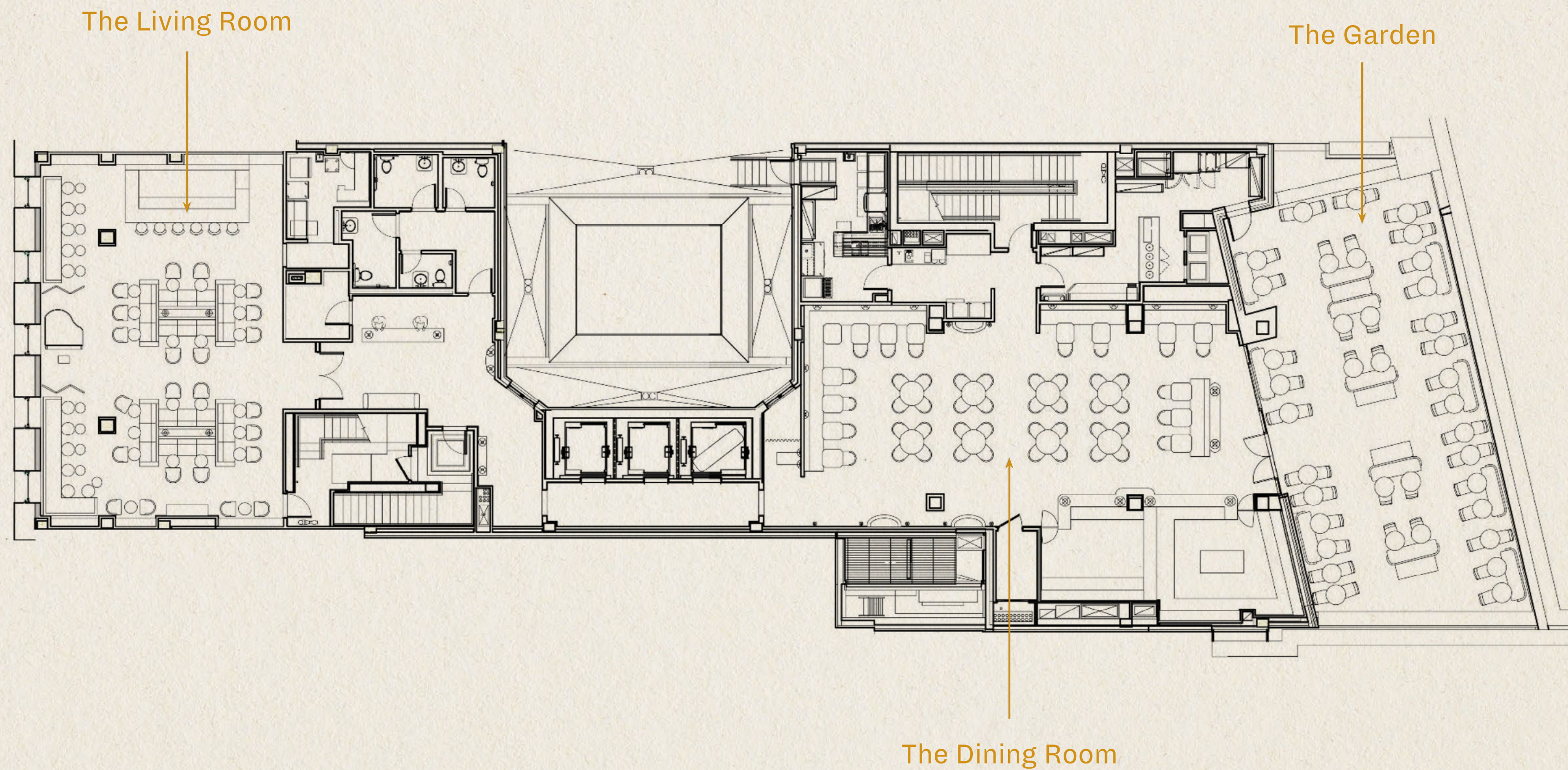
The 9<sup>th</sup> Floor



The 9<sup>th</sup> Floor



# Step inside a heady mix of spaces...



And if the night continues  
a little too long...



we have bedrooms, too.



# The Twenty Two New York Culinary Experience

At *The Twenty Two*, our Food and Beverage operations are curated by the renowned all-female team from New York City's beloved *Raf's* and the prestigious Michelin-starred *The Musket Room*.

Leading the charge are sisters Jennifer Vitagliano and Nicole Vitagliano, natives of the city, celebrated for their impeccable taste and unparalleled hospitality. Complementing their vision are the culinary talents of Executive Chef Mary Attea and Executive Pastry Chef Camari Mick, both recipients of numerous culinary accolades, including three consecutive James Beard Award nominations.



# NY Membership Pricing

\$750 Joining Fee

MEMBERSHIP-NYC@THETWENTYTWO.COM

## Local Patron

\$2,500

## Global Patron

\$3,300

## Young Patron

Under 30 Years Old  
\$1,500

## Young Global Patron

Under 30 Years Old  
\$2,000

## Joint Local

\$3,500

## Joint Global

\$4,500

*(prices per annum)*

Come as you are,  
we'll be here.

[APPLY FOR MEMBERSHIP HERE](#)

THE TWENTY TWO NEW YORK  
16 EAST 16<sup>TH</sup> STREET NY, NY 10003